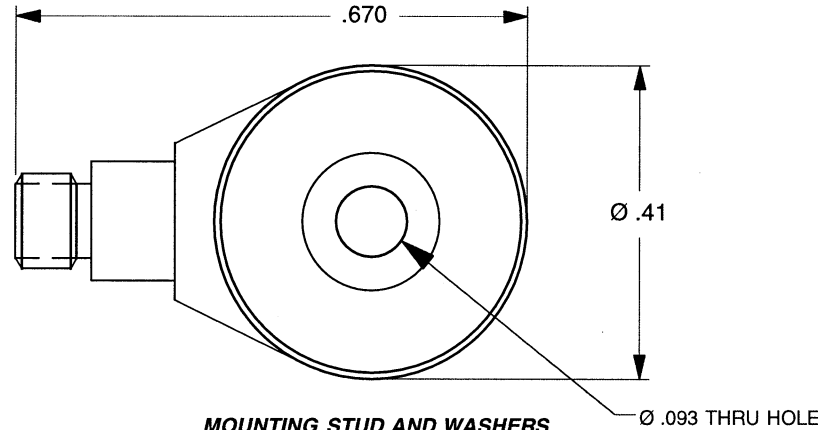


DYTRAN PROPRIETARY AND CONFIDENTIAL

THE INFORMATION CONTAINED IN THIS DRAWING IS THE SOLE PROPERTY OF DYTRAN INSTRUMENTS, INC. AND ANY REPRODUCTION IN PART OR AS A WHOLE OR ANY OTHER DISSEMINATION OF THIS INFORMATION WITHOUT THE WRITTEN PERMISSION OF DYTRAN INSTRUMENTS, INC. IS PROHIBITED.

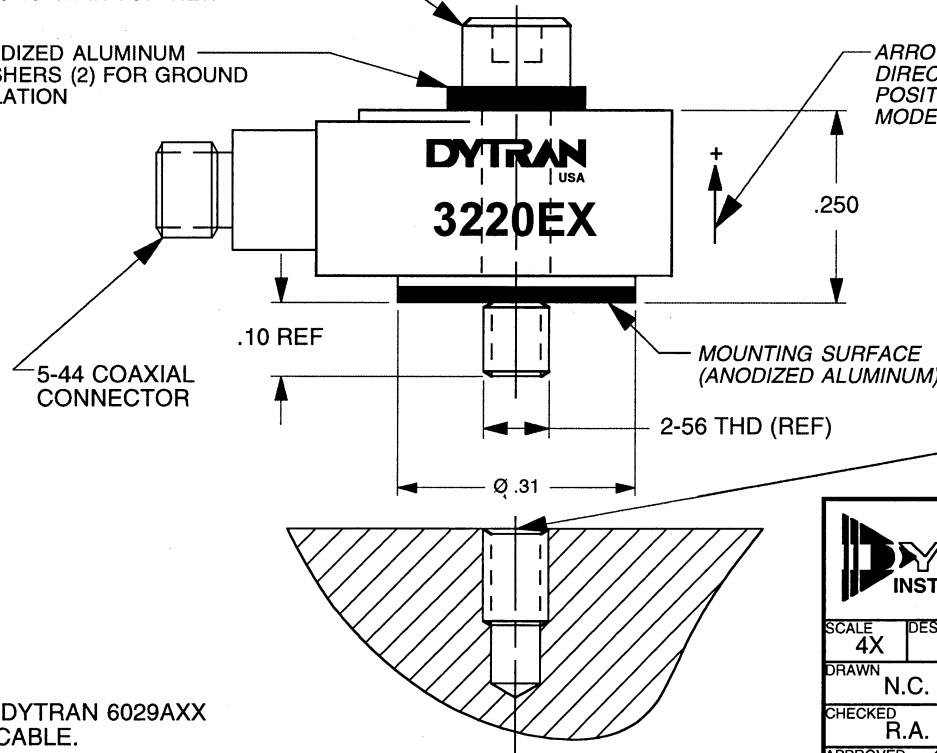
REV	ECN	DESCRIPTION	BY/DATE	CHK	APPR
A	5996	SEE ECN	RA, 05/21/09	<i>RA</i>	<i>RA</i>



**MOUNTING STUD AND WASHERS
NOT SHOWN IN THIS VIEW**

MODEL 6165 MOUNTING SCREW
ASSY
(REMOVABLE)
NOT SHOWN IN TOP VIEW

ANODIZED ALUMINUM
WASHERS (2) FOR GROUND
ISOLATION



ARROW INDICATES SENSE AND
DIRECTION OF ACCELERATION FOR
POSITIVE GOING OUTPUT SIGNAL FOR
MODEL 3220E.

MOUNTING SURFACE PREPARATION

1. PREPARE (OR SELECT) A FLAT MOUNTIN SURFACE OF AT LEAST .32 DIAMETER. SURFACE SHOULD BE FLAT TO .001 TIR FOR BEST HIGH FREQUENCY RESPONSE.
2. AT THE CENTER, DRILL #50 (Ø .070) X .20 DEEP.
3. TAP #2-56 UNC-2B X .125 MIN DEPTH.
4. CLEAN THE AREA CAREFULLY AFTER MACHINING TO REMOVE ALL CHIPS AND CUTTING OILS.

3. MATES WITH DYTRAN 6029AXX OR 6040AXX CABLE.
2. HOUSING/CONNECTOR MATERIAL: TITANIUM
1. WEIGHT: 2.7 GRAMS APPROX.

NOTES: UNLESS OTHERWISE SPECIFIED.

		MASTER ONLY IF IN RED		CHATSWORTH, CA.	
SCALE 4X	DESIGN N.C.	DATE 7/19/02			
DRAWN N.C.	DATE 7/19/02	PART NO. MODEL 3220E			
CHECKED R.A.	DATE 7/19/02	MAT'L			
APPROVED <i>RA</i>	DATE 5/26/09	NEXT ASSEMBLY	USED ON MODEL 3220E		
TITLE OUTLINE/INSTALLATION DRAWING MODEL 3220E MINIATURE ACCELEROMETER				DWG NO. 127-3220E	
SHEET 1 OF 1					



Dynamic Transducers and Systems

21592 Marilla St. • Chatsworth, CA 91311 • Phone 818-700-7818
 www.dytran.com • e-mail: info@dytran.com

SPECIFICATIONS MODEL 3220E LIVM MINIATURE ACCELEROMETER

SPECIFICATION	VALUE	UNITS
PHYSICAL		
WEIGHT	2.7	Grams
SIZE, DIA X HEIGHT (SEE DWG 127-3220E)	.41 X .25	IN
MOUNTING PROVISION	THRU HOLE FOR #2 MOUNTING SCREW	
MOUNTING SCREW, INSULATED (SUPPLIED)	2-56 X .437 LONG	SS
CONNECTOR, RADially MOUNTED	5-44	COAXIAL
MATERIAL, BASE, CAP & CONNECTOR	TITANIUM ALLOY	
ELEMENT TYPE	QUARTZ, PLANAR SHEAR	
PERFORMANCE		
SENSITIVITY, $\pm 10\%$ [1]	10	mV/G
RANGE F.S. FOR ± 5 VOLTS OUTPUT	± 500	G's
FREQUENCY RESPONSE, $\pm 5\%$	1 to 5,000	Hz
$\pm 15\%$.66 to 10,000	Hz
NATURAL FREQUENCY, MOUNTED.	>33	kHz
LINEARITY	1	%FS
TRANSVERSE SENSITIVITY, MAX.	5	%
STRAIN SENSITIVITY	.03	G's/ $\mu\sigma$ @ 250 $\mu\sigma$
RESOLUTION (EQUIVALENT ELECTRICAL NOISE)	.0032	G's RMS
ENVIRONMENTAL		
MAXIMUM VIBRATION/SHOCK	1500/2000	\pm G's/G's PEAK
TEMPERATURE RANGE	-60 to +250	°F
SEAL, HERMETIC [4]	Glass-to-metal and TIG welded	
COEFFICIENT OF THERMAL SENSITIVITY		%/ F
ELECTRICAL		
SUPPLY CURRENT/COMPLIANCE VOLTAGE RANGE [3]	2 to 20/+18 to +30	mA/Volts
OUTPUT IMPEDANCE, TYP.	100	Ohms
DISCHARGE TIME CONSTANT	0.5 to 1.2	Sec
OUTPUT BIAS VOLTAGE, NOM	10	VDC
OUTPUT SIGNAL POLARITY FOR ACCELERATION TOWARD TOP		Positive
ELECTRICAL ISOLATION, CASE GROUND TO MOUNTING SURFACE		10 Gigaohms, min.

ACCESSORIES PROVIDED: (1) MODEL 6165 MOUNTING SCREW ASSEMBLY. (INCLUDES MOUNTING SCREW AND 2 ANODIZED ALUMINUM WASHERS)

- [1] Measured at 100 Hz, 1 G RMS per ISA RP 37.2.
- [2] Measured using zero-based best straight line method, % of F.S. or any lesser range.
- [3] Do not apply power to this device without current limiting, 20 mA MAX. To do so will destroy the integral IC amplifier.
- [4] Low outgassing, use with Dytran cable assembly model 6029AXX (XX=Length in feet).